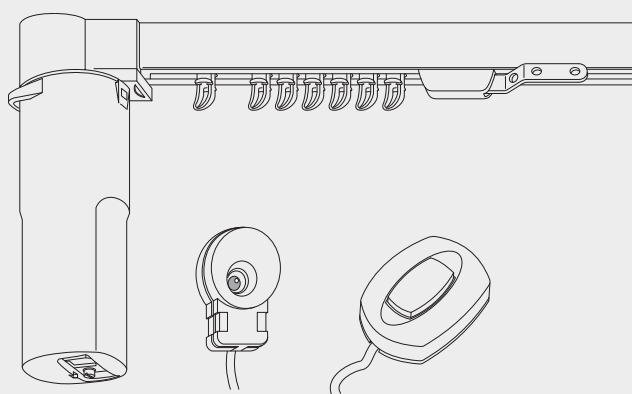


Electric Curtain Track System

Silent Gliss® 5070 Dawn & Dusk



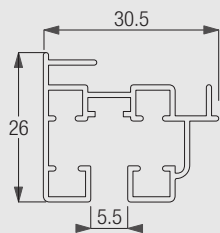
Product Information

- Purpose designed for light-medium weight domestic use only.
- Easy wall or ceiling fix.
- White only.
- No pre-wiring necessary.
- Non-stretch belt operation.
- Choice of operating methods - either fixed switch or via Dawn & Dusk sensor.
- Automatic end-of-travel stop. The fixed switch stops curtains at any point.
- Excellent security device when homes are unoccupied.
- Straight only.
- Delivered made-to-measure and ready to fit. **Cannot be cut down on site.**



5070

Profile, Bending and Specification Information



0940



Cannot be bent

Specification Guide - download from Silent Gliss Extranet

Silent Gliss 5070 curtain track, electrically operated, white powder coated aluminium, complete and assembled with motor 0941, internal drive belt, gliders 0967 at 12/m. 0940 profile, ceiling or wall fix with brackets 0979 at 500mm centres each screwed to timber/plugged and screwed. To be installed correctly according to Silent Gliss fitting instructions.Lm

System Dimensions



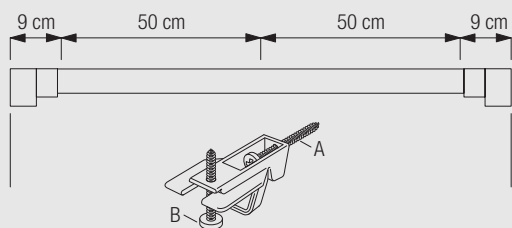
5m



15kg

Fitting Information

Bracket and profile Positioning



Brackets should be equally spaced maximum 50 cm apart.

The universal bracket 0979 can be used for:

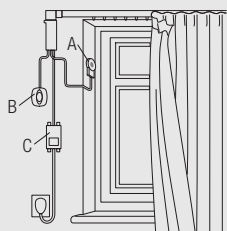
A: wall fixing (vertical adjustment) and
B: for optional ceiling fixing



Clip the track (1) onto brackets as shown until the track locks into position with a click.

To release track again if necessary, push bracket ring (2) and remove track.

Installation Guide



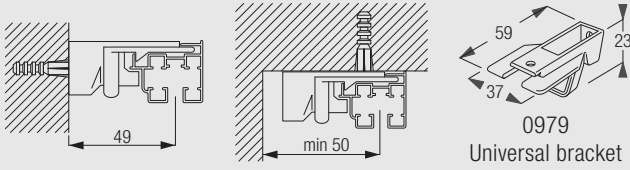
A: Dawn to dusk sensor
B: Switch
C: Transformer

Usual positioning of system with control unit hidden from view by curtain.

The system is delivered including a detailed installation and user guide.

Fitting Options

Wall or ceiling fixing with universal bracket 0979



Standard Accessories

0940	Profile		0941	Motor 0941	
0942	Transformer		0943	Light sensor switch	
0944	Switch		0966	Belt	
0967	Gliders		0969	Master carrier cover	
0970	Adjustable master carrier		0979	Universal bracket	

Useful Information

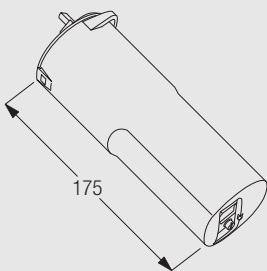
The 5070 Dawn & Dusk system is only suitable for single or pair stack curtains.



5070

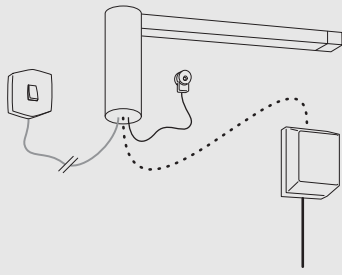
Motor and Controls Information

Motor Silent Gliss 0941



- Torque: 1.2Nm
- Voltage: 24V DC
- Power: 0.8A
- CEE Standard
- Weight: 415g

Operation Methods



- Supply 230V
(2 + $\frac{\oplus}{\ominus}$)
- Supply 24V dc
(2 core)
- Flat Signal cable
(200cm)
- Flat Signal cable
(95cm)

Supplied with both fixed switch and Dawn & Dusk sensor. Fixed switch can be used to override sensor.



5070