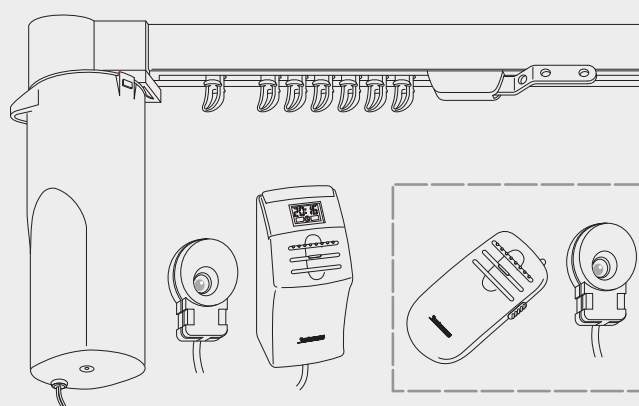


Electric Curtain Track System

Silent Gliss® 5080 Timer Select With Optional Remote Control (AR)



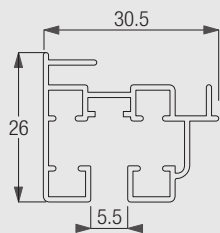
Product Information

- Purpose designed for light-medium weight domestic use only.
- Easy wall or ceiling fix.
- White only.
- No pre-wiring necessary.
- Non-stretch belt operation.
- 5080 Timer Select allows programming of opening and closing times of curtains and incorporates an overriding switch. It may also be set to operate on a Dawn & Dusk basis with daylight level. Alternatively it can open with the sensor and close on the timer and vice versa.
- The optional auto remote (AR) provides additional remote control handset and IR sensor.
- Automatic end-of-travel stop. Switches incorporated into the timer allow curtains to be stopped at any point.
- Excellent security device when homes are unoccupied.
- Straight only.
- Delivered made-to-measure and ready to fit. **Cannot be cut down on site.**



5080

Profile, Bending and Specification Information



0940



Specification Guide - download from Silent Gliss Extranet

Silent Gliss 5080/5080AR curtain track, electrically operated, white powder coated aluminium, complete and assembled with motor 0941, internal drive belt, gliders 0967 at 12/m. 0940 profile, ceiling or wall fix with brackets 0979 at 500mm centres each screwed to timber/plugged and screwed. To be installed correctly according to Silent Gliss fitting instructions.Lm

System Dimensions



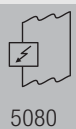
5m



15kg

System Options

5080 Timer Select



5080



0946



0947

5080 Timer select allows programming of opening and closing times of the curtains and incorporates an overriding manual switch, (cable length timer to mains power is 285cm).

5080 AR Timer select including option Auto Remote (AR)



0964



0963



0946

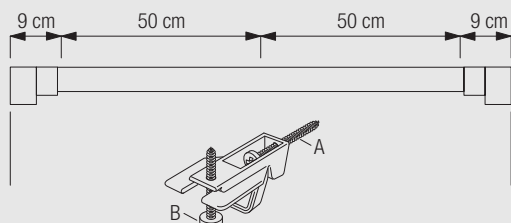


0949

5080AR curtain track system including the infra-red auto remote control 0949 provides also all the features of the Timer Select version. (cable length timer 0946 to IR sensor 0963 is 100cm)

Fitting Information

Bracket and profile positioning



Brackets should be equally spaced maximum 50 cm apart.

The universal bracket 0979 can be used for:

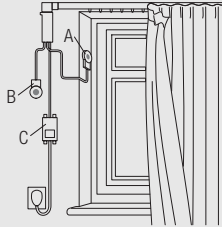
- A: Wall fixing (vertical adjustment) and
- B: Optional ceiling fixing



Clip the track (1) onto brackets (2) as shown until the track locks into position with a click.

To release track again if necessary, push bracket ring and remove track.

Installation guide



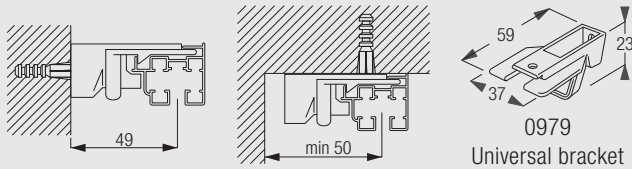
A: Dawn to dusk sensor
 B: IR Sensor (for use with remote handset)
 C: Timer Unit

Usual positioning of system with control unit hidden from view by curtain.

The system is delivered including a detailed installation and user guide.

Fitting Options

Wall or Ceiling fixing with universal bracket 0979



Standard Accessories

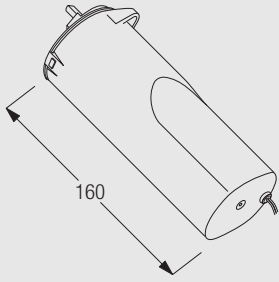
0940	Profile		0945	Motor		5080
0946	Timer		0947	Sensor		
0966	Belt		0967	Gliders		
0969	Master carrier cover		0970	Adjustable master carrier		
0979	Universal bracket					

Optional Accessories

0949	Remote control handset		0963	IR Sensor	
0964	IR sensor fixing hook				

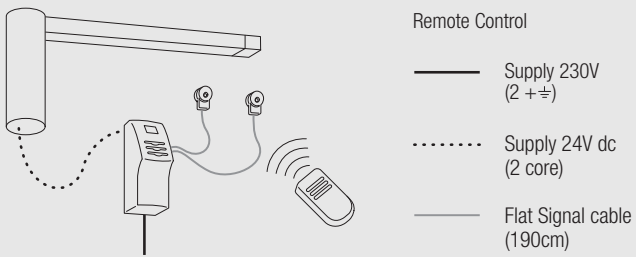
Motor and Controls Information

Motor Silent Gliss 0945



- Torque: 1.2Nm
- Voltage: 24V DC
- Power: 1.2A
- CEE Standard
- Weight: 385g

Operation methods



Choice of various control functions. From fixed switch to timer and remote control.



5080