

**B - Dry Contact Control**

- 1- Common (Black White)
- 2- Direction (Orange/White)
- 3-Direction (White)

**C- Removable radio aerial**

**E- limit fine adjustment**

**Motor ratings**  
 SG 4960 , 0.3a/55rpm – 50/60Hz 3Nm 40w

**SG**  
 ,SG4760,SG4780,SG2350  
 SG4970 ,0.8a/32rpm – 50/60Hz 3Nm 40w

SG2350,SG4970 SG4980  
 0.8/20rpm – 50/60Hz 6Nm 50w

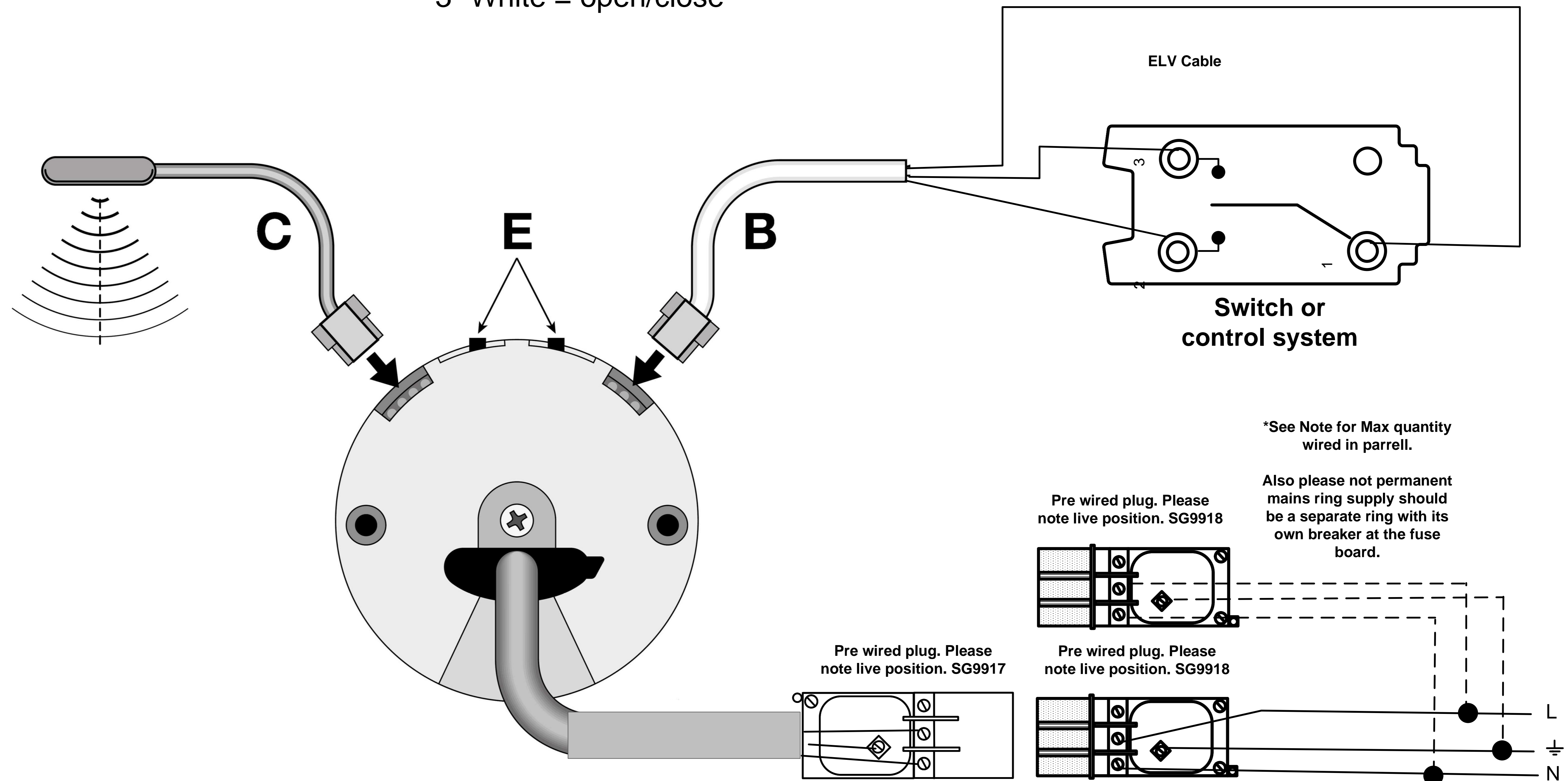
SG4880 1.1a/ 20rpm - 50/60Hz 10Nm 40w

**Note**

- 8\* Motors can be wired in Parallel only.
- 8\* Motors connected via the dry contact cables only.

Silent Gliss Ltd  
 Poorhole Lane.  
 Broadstairs  
 Kent CT10 2PT  
 Tel 01843 863571  
 Fax 01843 864503  
 E-mail: info@silentgliss.co.uk  
 Web site; www.silentgliss.co.uk

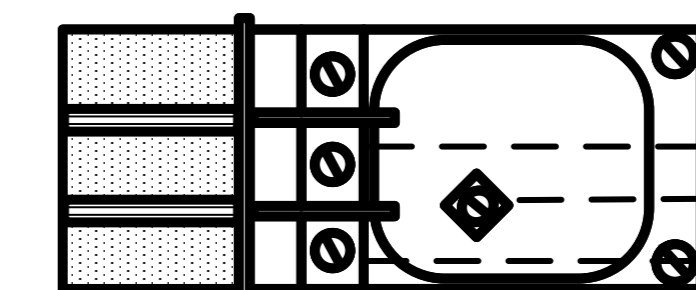
- 1- Black = common
- 2- Orange = open/close
- 3- White = open/close



\*See Note for Max quantity wired in parrell.

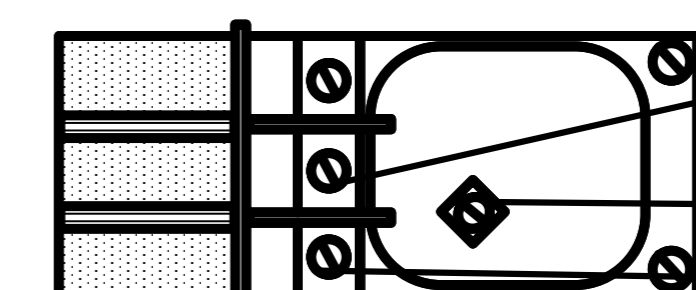
Also please not permanent mains ring supply should be a separate ring with its own breaker at the fuse board.

Pre wired plug. Please note live position. SG9917



Pre wired plug. Please note live position. SG9918

Pre wired plug. Please note live position. SG9918



**Silent Gliss Radio Control System 9940 & Dry Contact Only**

**SERIES 40 TUBULAR MOTORS 240V AC**

**Systems: SG4960,SG4970,SG4880,SG4760,SG4770,SG4780,SG2350**

**Drawing Number**

**E 804 /3**

**Issue Date 14.4.21**